

CAT CANYON

The Cat Canyon Exhibit provides both ground-level and overlook viewing of some of the small cats found in the Sonoran Desert Region. The cats may seem hard to spot in the crevices and vegetation of their enclosures, but keep looking. You'll be rewarded.

CATS

Look for the cats from above. You will often see them curled asleep upon a rock shelf.

Ask: *Where do cats like to sleep?*

- on a cliff under a rock ledge
- in a high, hidden place

Ask: *Why would they choose this spot?*

- it is shady and cool
- it is safe from other animals
- it is a good spot from which to watch



OCELOT

Ask the children: *How do you think the ocelot's spots help it?*

- they help the ocelot blend in to its home and surroundings
- they help the ocelot hide while it hunting its prey

LIFE ON THE ROCKS

Life on the Rocks is an exhibit designed to showcase the animal and plant life that live on, around, in-between and under the rocks. This exhibit encourages free exploration as the students can "lift" rocks to look for scorpions and bend down and get eye to eye with a Gila monster.

ELF OWL

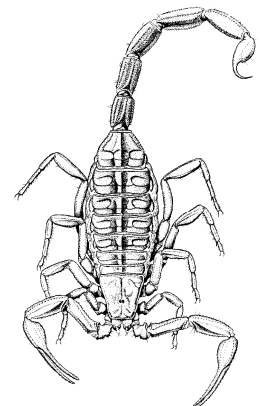
Ask: *Why does the elf owl live in the saguaro cactus?*

- It is safe
- It is cool/warm

GILA MONSTER

Ask: *Why do you think the Gila monster have such bright colored skin?*

- It is a warning that it is dangerous (red light means stop)
- It helps blend into its surroundings



SCULPTURES

Scattered around this exhibit are 13 sculptures of various animals that spend their life on the rocks. See if your students can find and identify all 13.